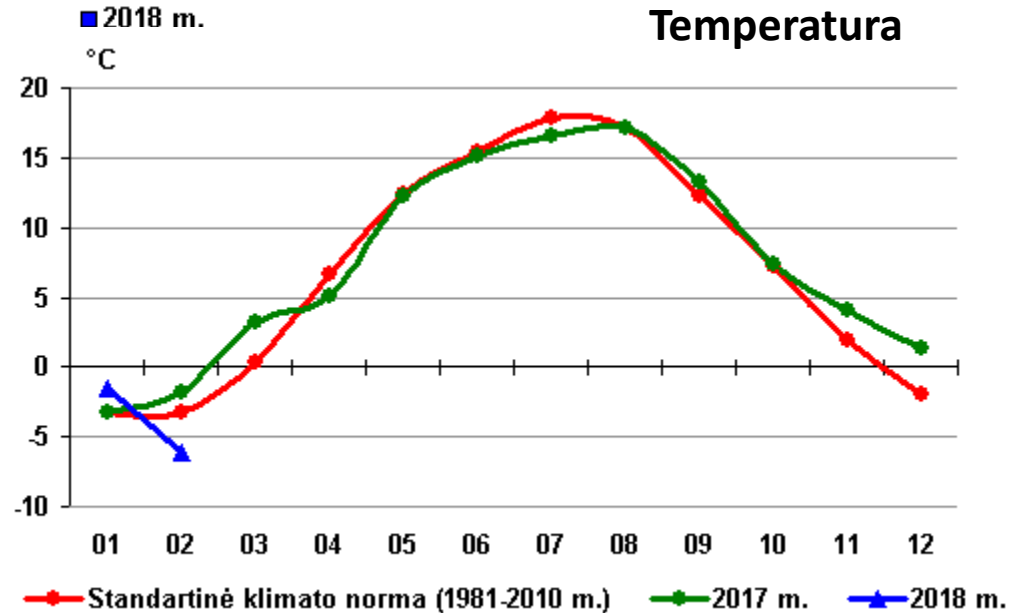
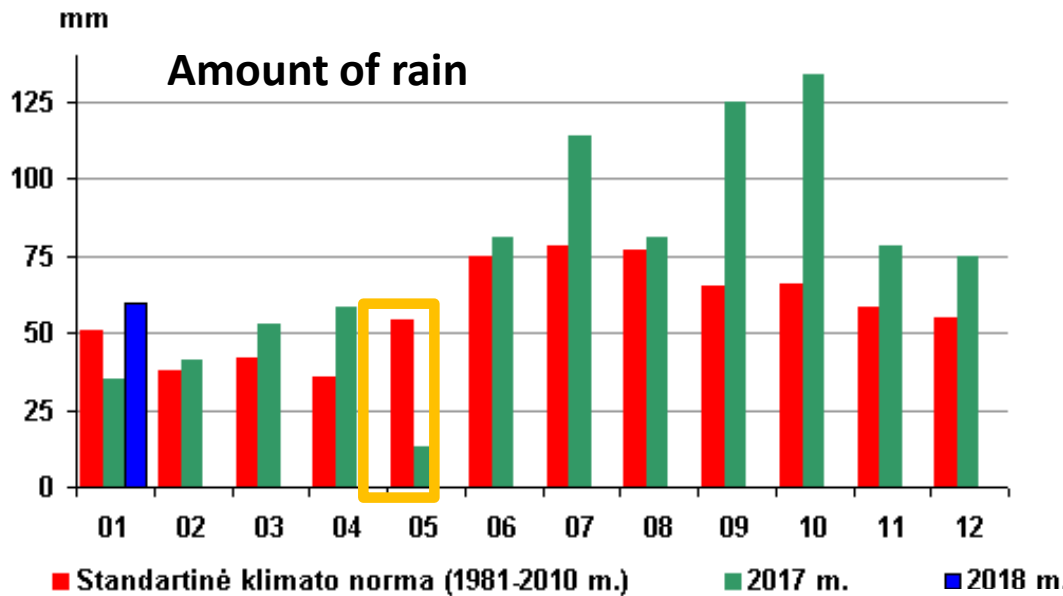




Season 2017

**Roma Semaškienė
Institute of Agriculture, LAMMC**

Weather data, LHMT



Season 2017 wheat

Severity of diseases

Tan spot – 11-35 %

Septoria 2-6 %

Fusarium head blight 2-20 %

Yield increase 0,5-2,0 t/ha



Season 2017 barley

Severity of diseases

Mildew – 5-26 %.

Net blotch – 5-12 %

Ramularia – 2,4-14

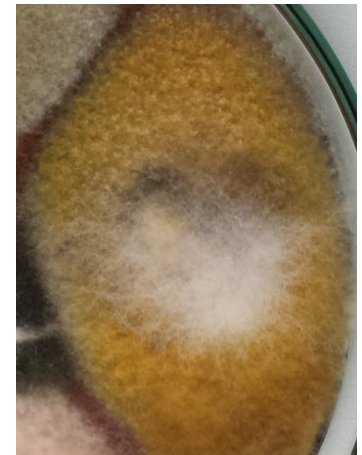
Rust – 0,5-5,0 %

Yield increase – 0,7-1,7 t/ha



M. nivale

- Identified on leaf of spring and winter wheat
- 46 samples of commercially grown winter wheat in 2017 seeds were tested.
- Infection level 0-39 %.



Microdochium spp. in winter cereals

2017 m.

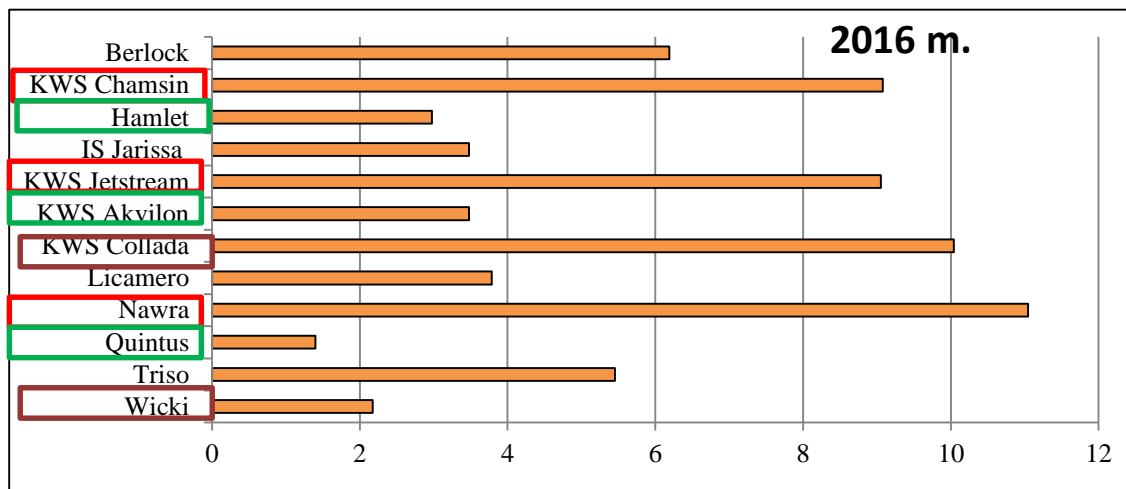


Variety	% of infected seeds		Grūdų derlius t/ha	
	<i>Microdochium</i> spp.	<i>Fusarium</i> spp.	Untreated	Treated
Žieminiai rugiai				
Pallazo	38	-	2,9	7,0 (+4,1)
Mata dor	11	30	6,9	7,3 (+0,4)
Žieminiai kvietrugiai				
Remiko	7	18	10,9	11,6 (+0,7)
Sequenz	2	52	7,4	8,2 (+0,8)

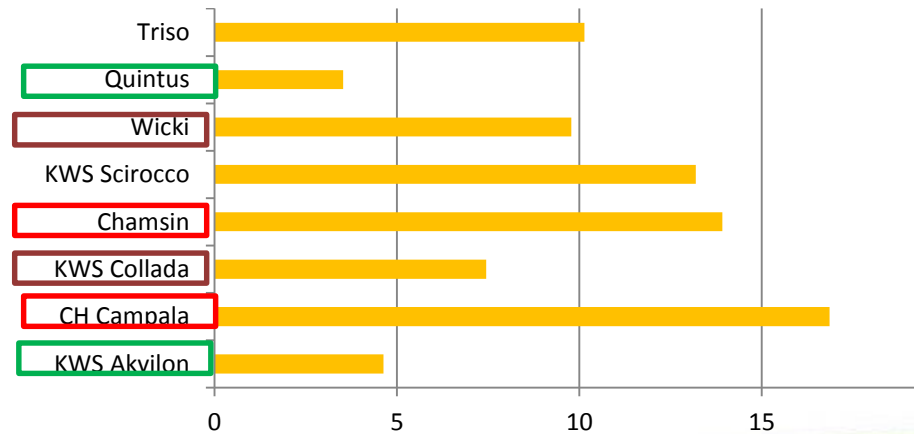
***Fusarium* head blight in wheat**



Susceptibility of spring wheat varieties to *Fusarium* head blight

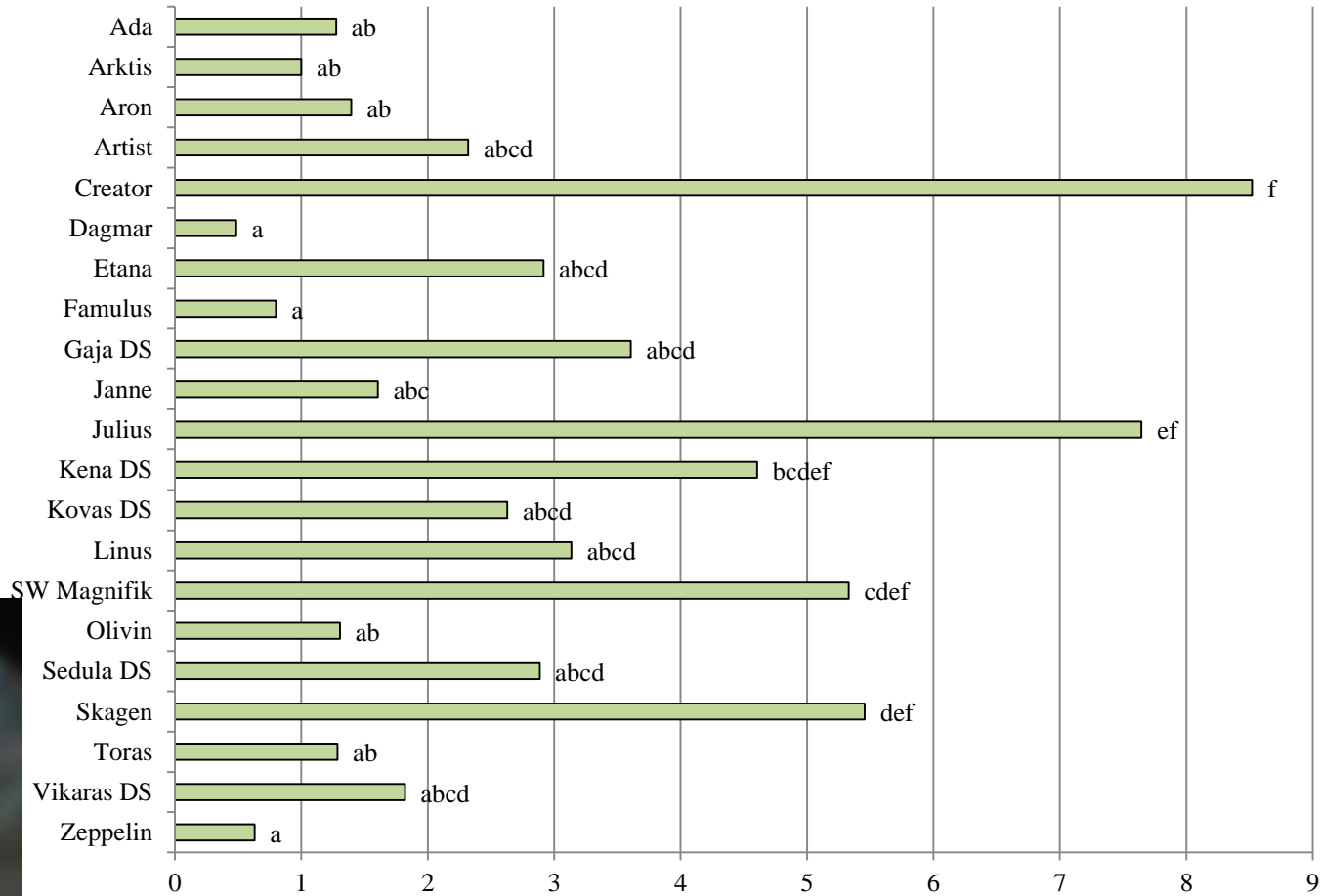


2017 m.



Susceptibility of winter wheat varieties to Fusarium head blight

2016 m.



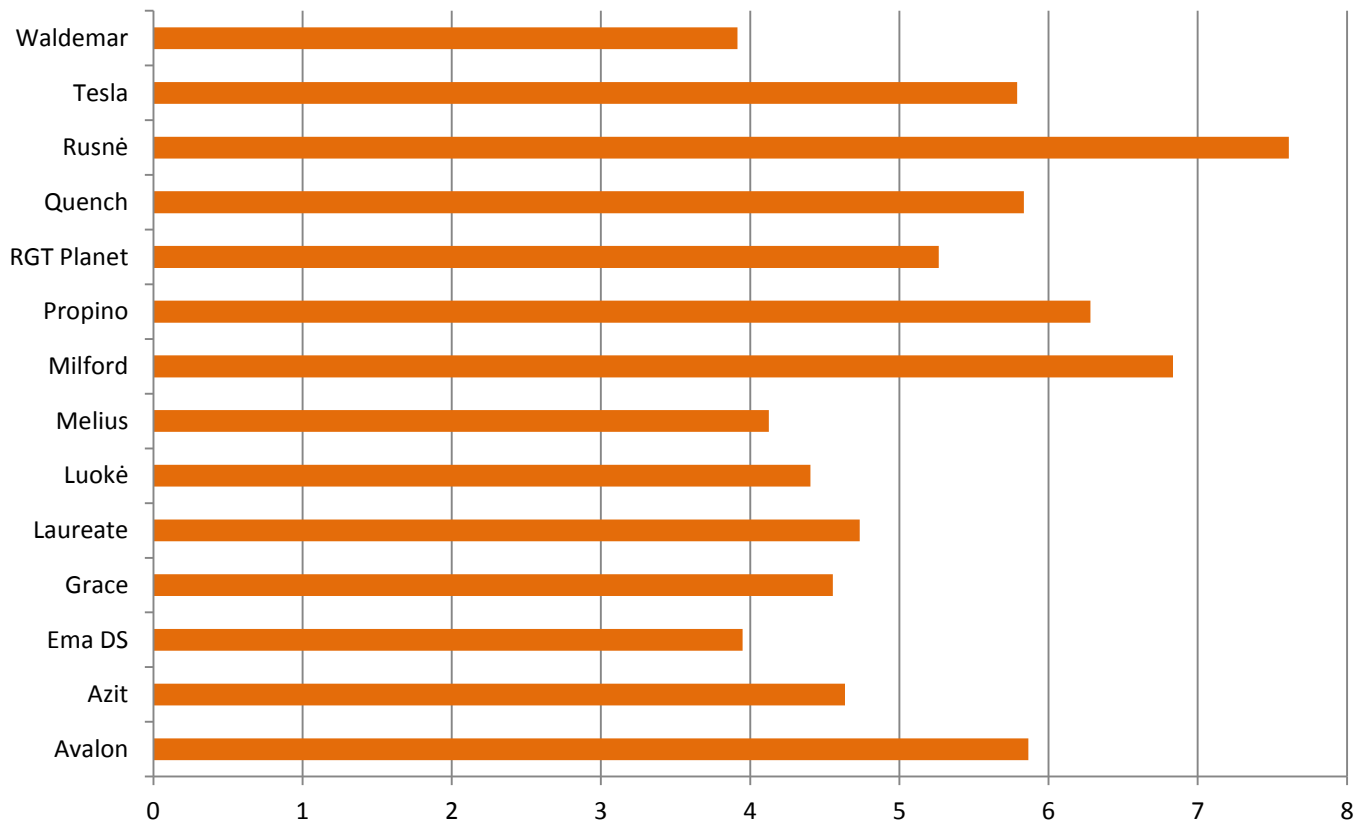
Varpų fuzariozė miežiuose

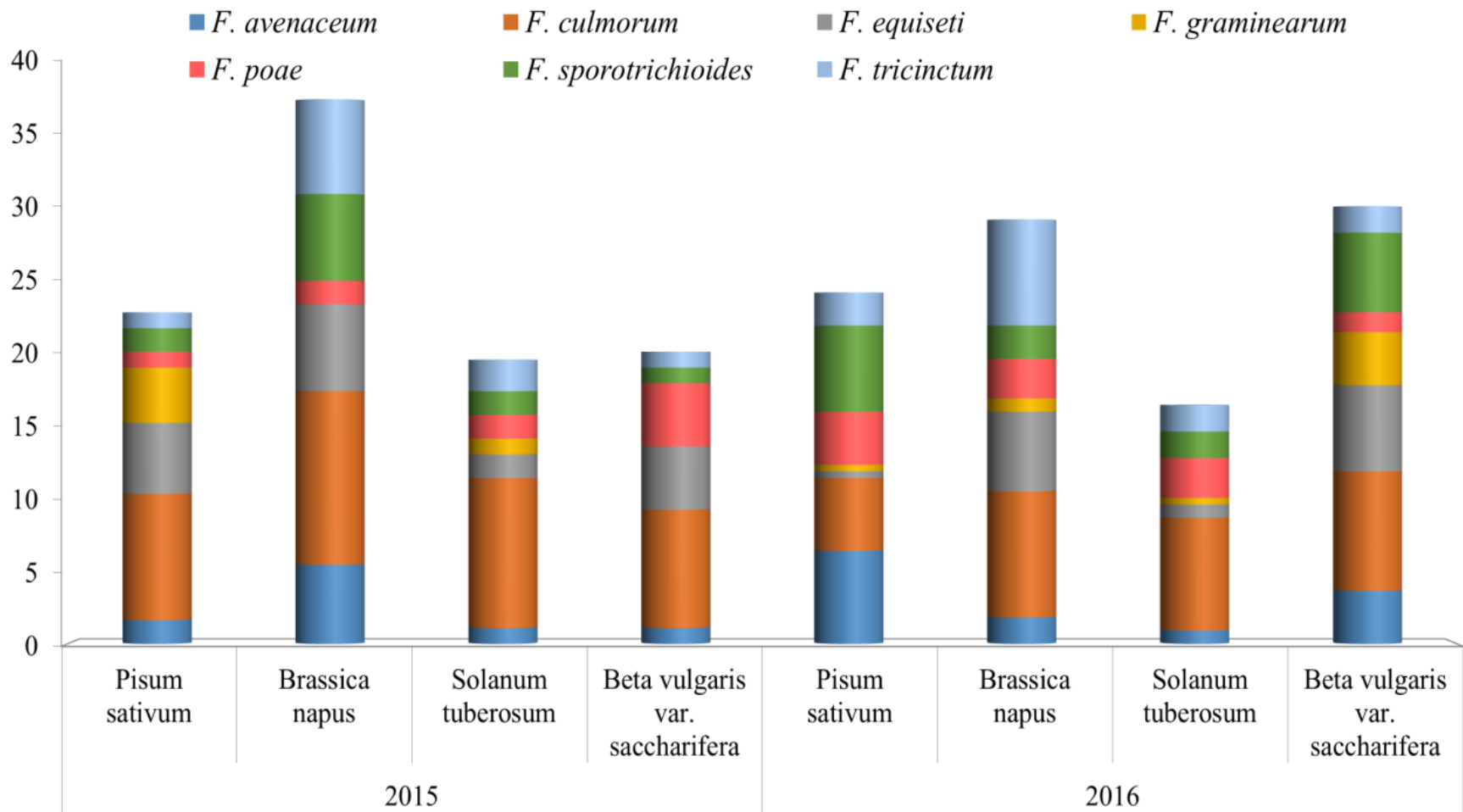
Yield and quality reduction



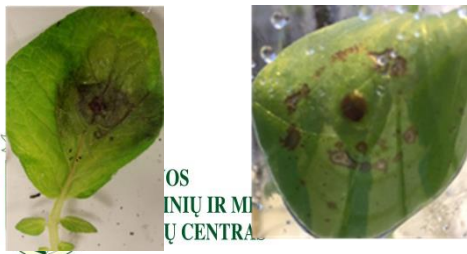
Susceptibility of spring barley varieties to *Fusarium* head blight

2017 m.





***Fusarium* species on non-cereals crops**



J. Kelpšienė, P. Svegžda, N. Rasiukevičiūtė, S. Supronienė

