

*EJP Soil*

*EU Regional Forum -Peatland rewetting in agriculture*

*05 April 2022*

Partner in the



GREIFSWALD  
MIRE  
CENTRE



# Peatland Rewetting and Paludiculture – Prospects of EU CAP and Carbon Farming Initiative

Jan Peters, Michael Succow Foundation / GMC

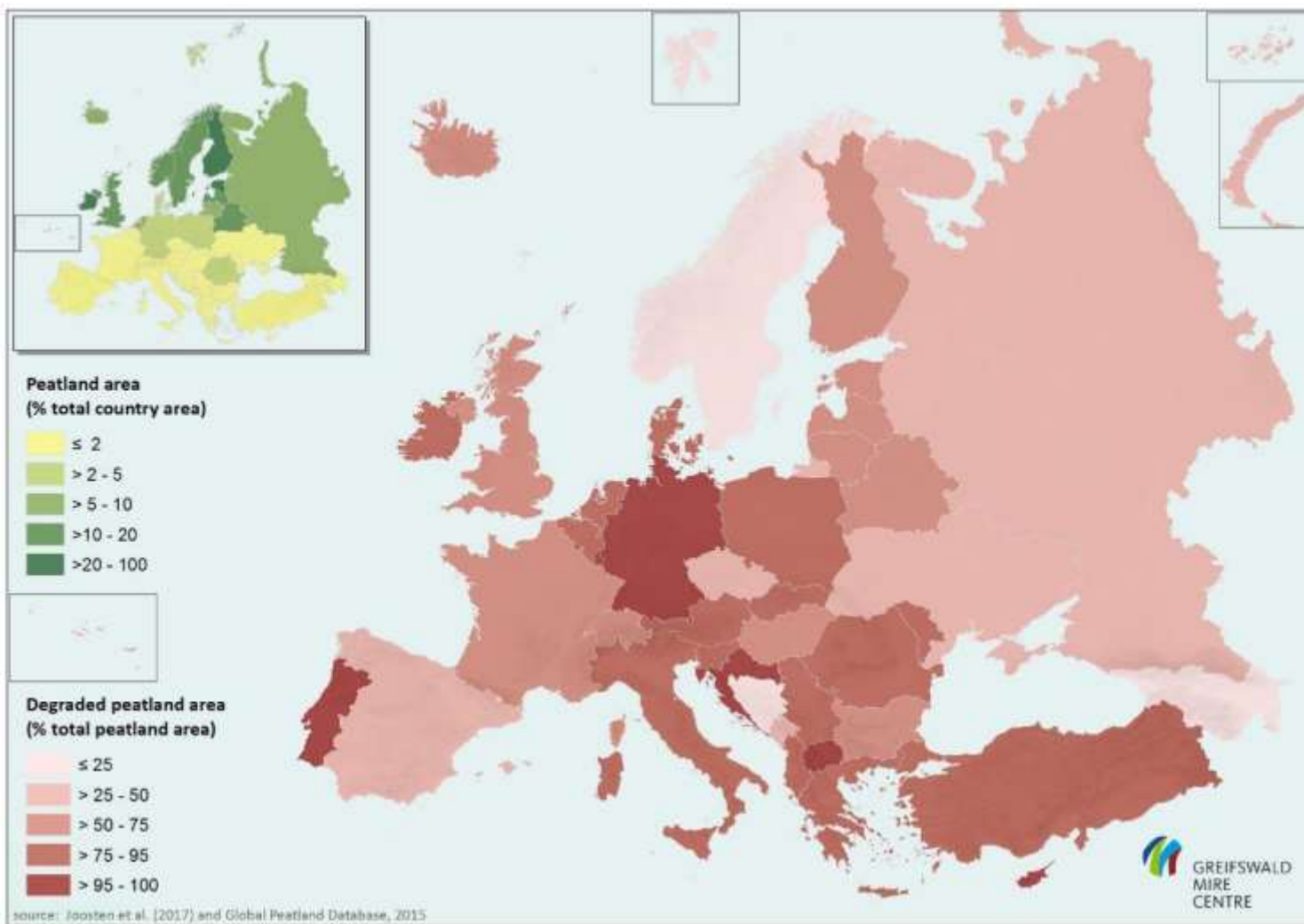


J.Peters



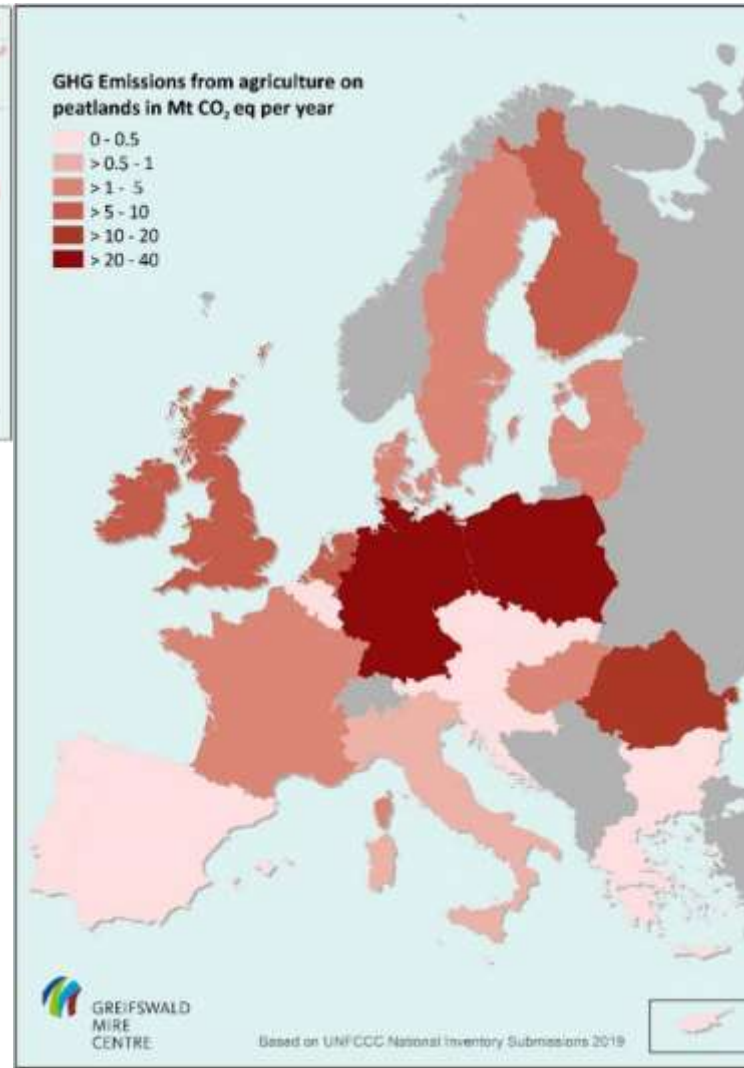
J.Peters

# Peatlands in EU Member States



Europe's  
peatlands  
25% degraded,  
in EU 50%

# Peatlands in EU Member States



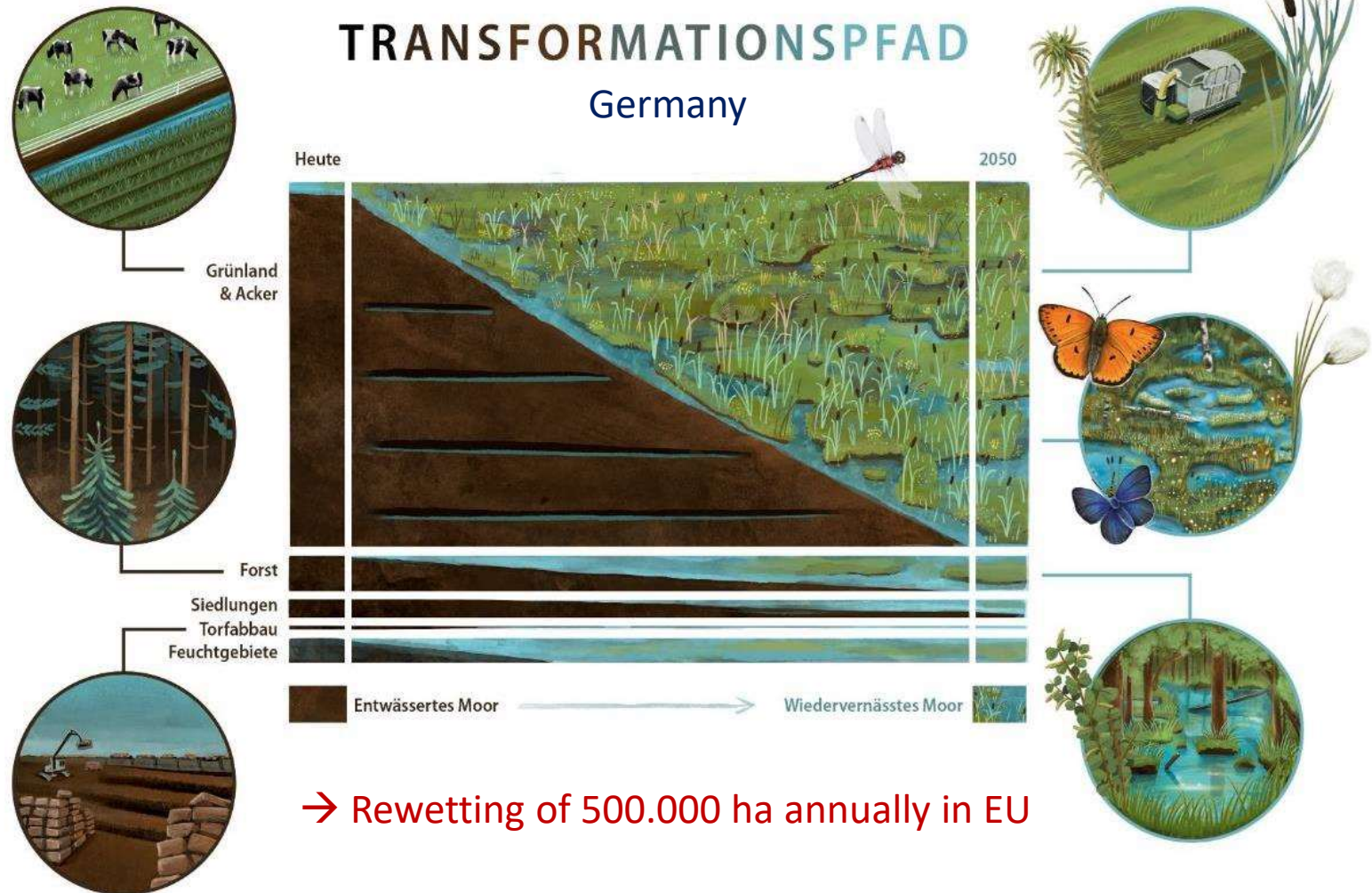
Europe's  
peatlands  
25% degraded,  
in EU 50%

Total EU:  
220 Mt CO<sub>2e</sub>  
per year  
=  
5% of EU GHG  
emissions

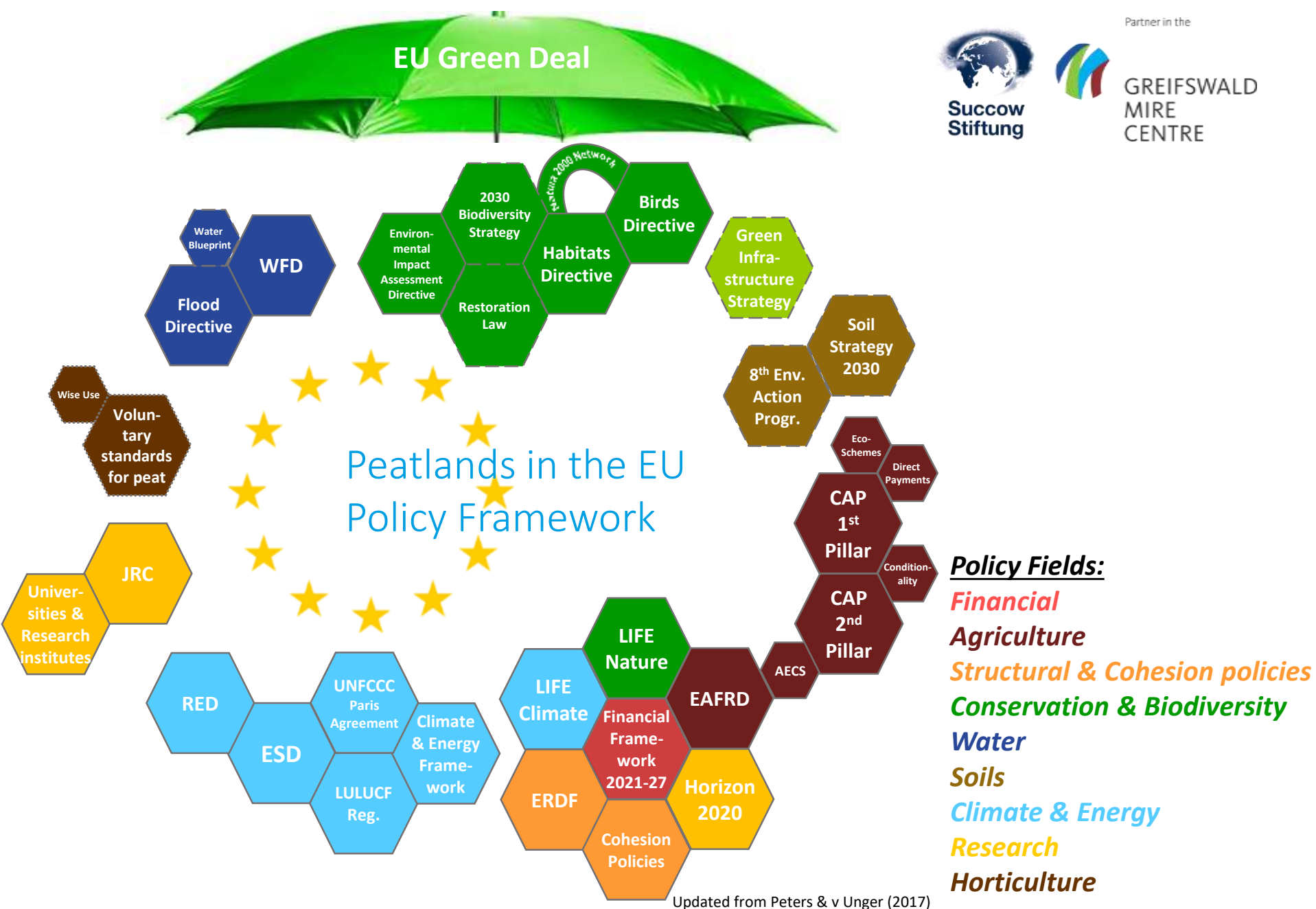
[https://greifswaldmoor.de/files/dokumente/Infopapiere\\_Briefings/2021\\_EU\\_Restoration\\_Targ\\_Peatlands\\_Policy%20brief.pdf](https://greifswaldmoor.de/files/dokumente/Infopapiere_Briefings/2021_EU_Restoration_Targ_Peatlands_Policy%20brief.pdf)



# Emission reduction pathway



Adapted from: Tanneberger et al. 2021: [http://mires-and-peat.net/media/map27/map\\_27\\_05.pdf](http://mires-and-peat.net/media/map27/map_27_05.pdf)



Updated from Peters & v Unger (2017)

## Common Agricultural Policy (CAP)

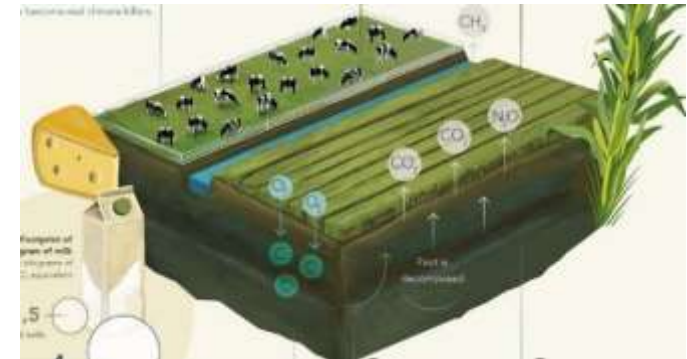
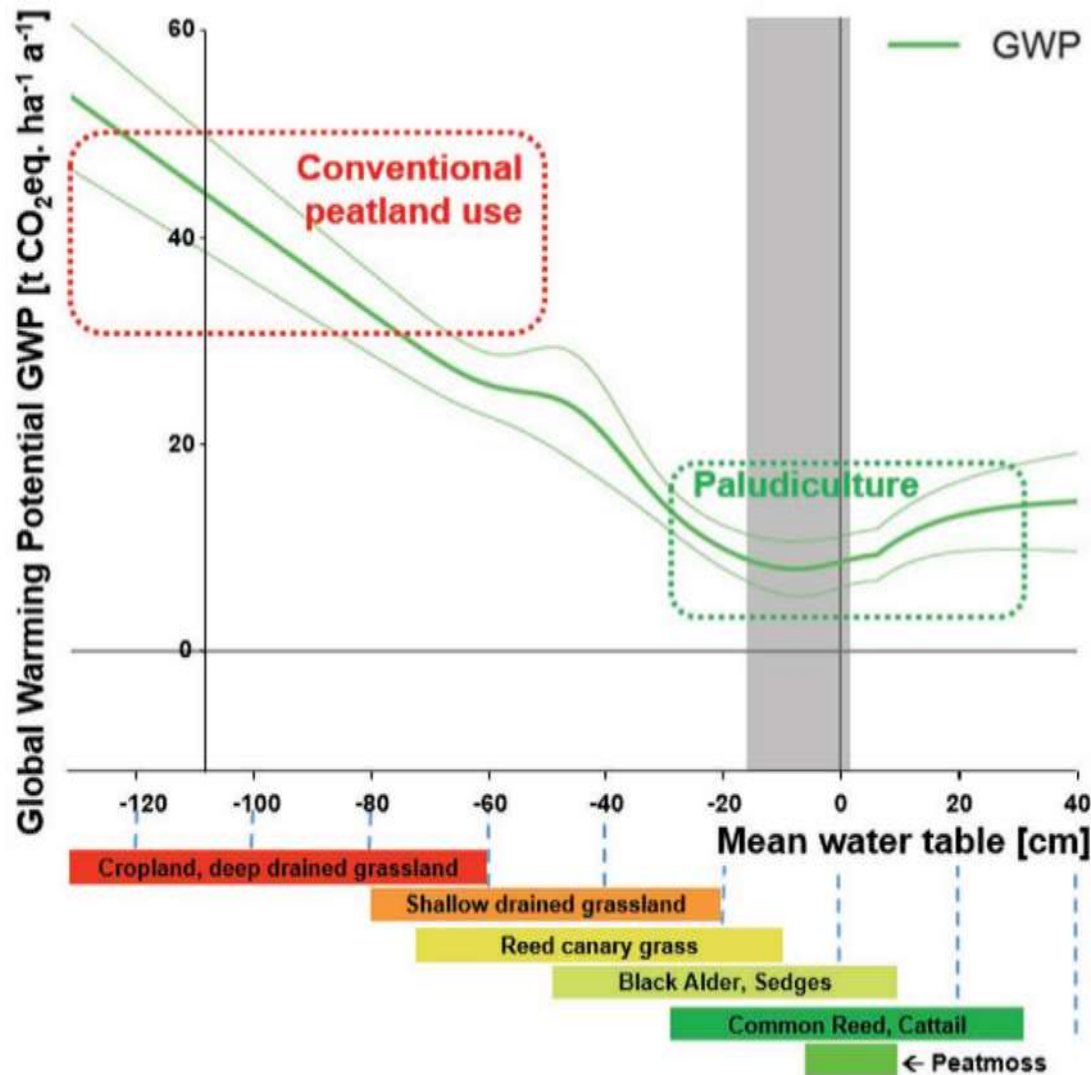
~60 bln. €/a

2022

Main driver of peatland degradation due to **payments for drainage-based agriculture**

→ Payments counteract major policy targets (climate, biodiversity, soil, water etc.)

# Why paludiculture?



Tanneberger et al. 2021: <https://onlinelibrary.wiley.com/doi/epdf/10.1002/adso.202000146>





Council of the  
European Union



Partner in the

GREIFSWALD  
MIRE  
CENTRE

---

Interinstitutional File:  
2018/0216(COD)

---

## Eligibility for paludiculture in new CAP (page 3):

In view of the high environmental ambition of the CAP, the eligible area should not be reduced as a result of the implementation of certain rules of conditionality and of the schemes for the climate and the environment under direct payments. **Agricultural areas should not become ineligible for direct payments when cultivated with non-agricultural products by way of paludiculture under EU schemes which contribute to one or more environmental or climate related objectives of the Union.** Furthermore, agricultural areas should remain eligible for direct payments when subject to certain EU provisions relating to the environmental protection, or afforested under rural development measures, including those afforested under the compliant national schemes, or areas under certain set-aside commitments.

<https://data.consilium.europa.eu/doc/document/ST-11004-2021-ADD-1-REV-2/en/pdf>



Paludiculture =  
productive use of rewetted peatlands

## Setting up new utilisation chains:

- grasses (sedges, reed canary grass, reed, cattail)
- peat moss
- wood (alder)
- Sundew
- ...



## Paludiculture products

- Construction and insulation material
- Fibre for paper and moldings
- Potting soil and substrates
- Bioenergy
- Biorefinery



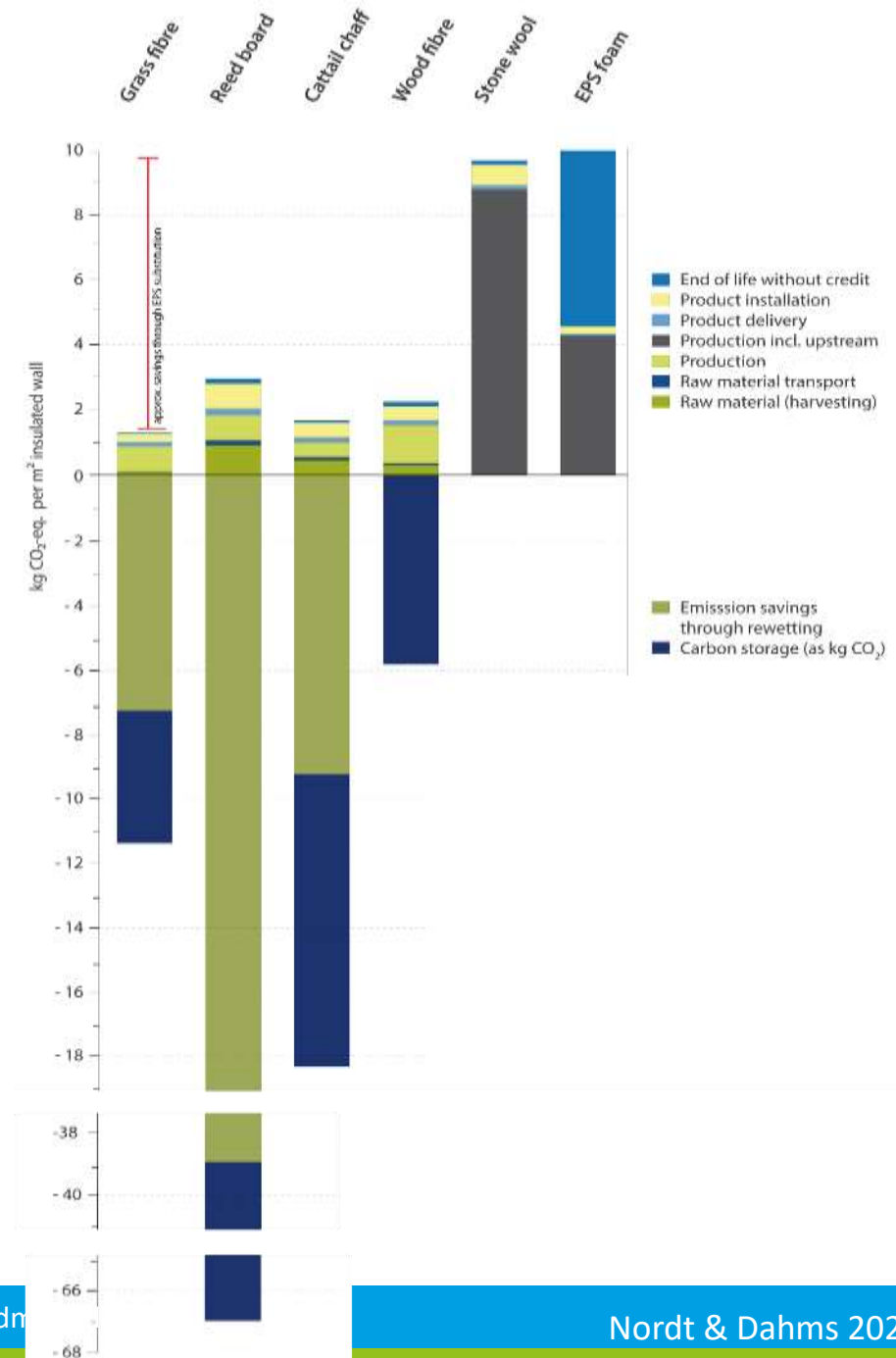


## Products can be climate protective 3-fold

### Carbon footprint of paludi insulation materials:

1. Reduction of soil emissions
2. Carbon storage in long-life products
3. Replacement of fossil resources / energy intensive products

→ Not included: potential new peat formation = carbon sequestration



## Paludiculture is 'terra incognita'

Development of the entire production chain:

- Crop production (breeds, seeding, maintaining, harvesting...)
- Machinery
- Products
- Infrastructure/logistics
- Value chain concepts (integrative)





## Paludiculture in Europe



## Paludiculture sites in Europe

Wet islands in a drained landscape...



## Socio-economic challenges

- Break with **traditions**
  - Resistance of local population
- Fragmented **ownership structure**
  - Impact on neighbouring sites
- Conflict with goals of **nature conservation**

- Awareness raising and advisory services
- Catchment-based approaches
- Land consolidation and regional cooperation (e.g. water boards, farmer associations, landscape care)
- Safeguards for biodiversity protection

Paradigm shift needed: **drainage-focused land use** → **wet landscapes**

## ANNEX III

### **RULES ON CONDITIONALITY PURSUANT TO ARTICLE 11**

SMR: Statutory Management Requirement

GAEC: Standards for good agricultural and environmental condition of land

Areas	Main Issue	Requirements and standards		Main objective of the standard
Climate and environment	Climate change (mitigation of and adaptation to)	GAEC 1	Maintenance of permanent grassland based on a ratio of permanent grassland in relation to agricultural area at national, regional, sub-regional, group-of-holdings or holding level in comparison to the reference year 2018.  Maximum decrease of 5% compared to the reference year.	<i>General safeguard against conversion to other agricultural uses to preserve carbon stock</i>
		GAEC 2	Protection of wetland and peatland <sup>4</sup>	<i>Protection of carbon-rich soils</i>

<https://data.consilium.europa.eu/doc/document/ST-11004-2021-ADD-2/en/pdf>



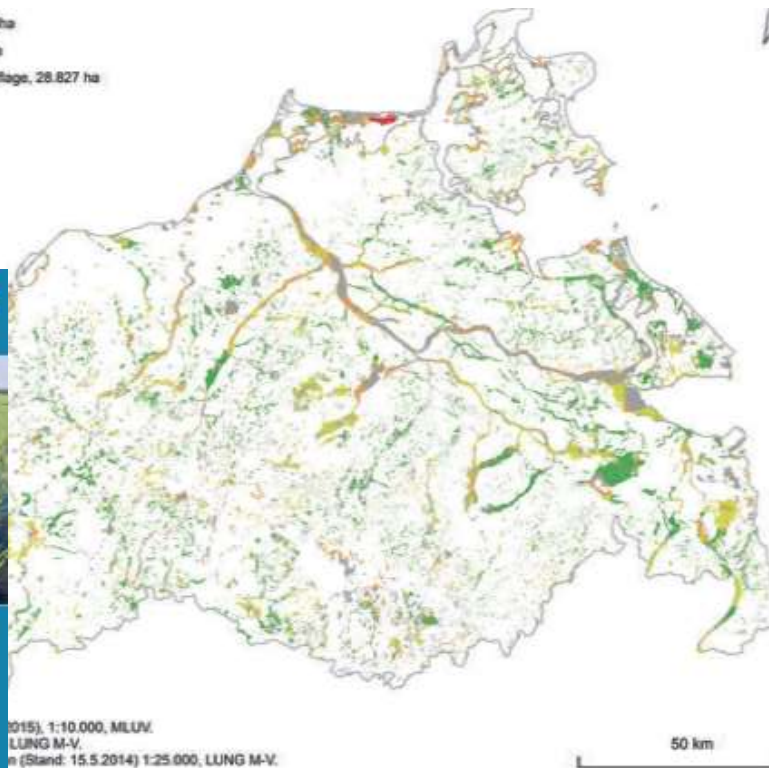
# Paludiculture Strategies

- Clear **delineation** of peatland areas
- Involvement of all **stakeholders**

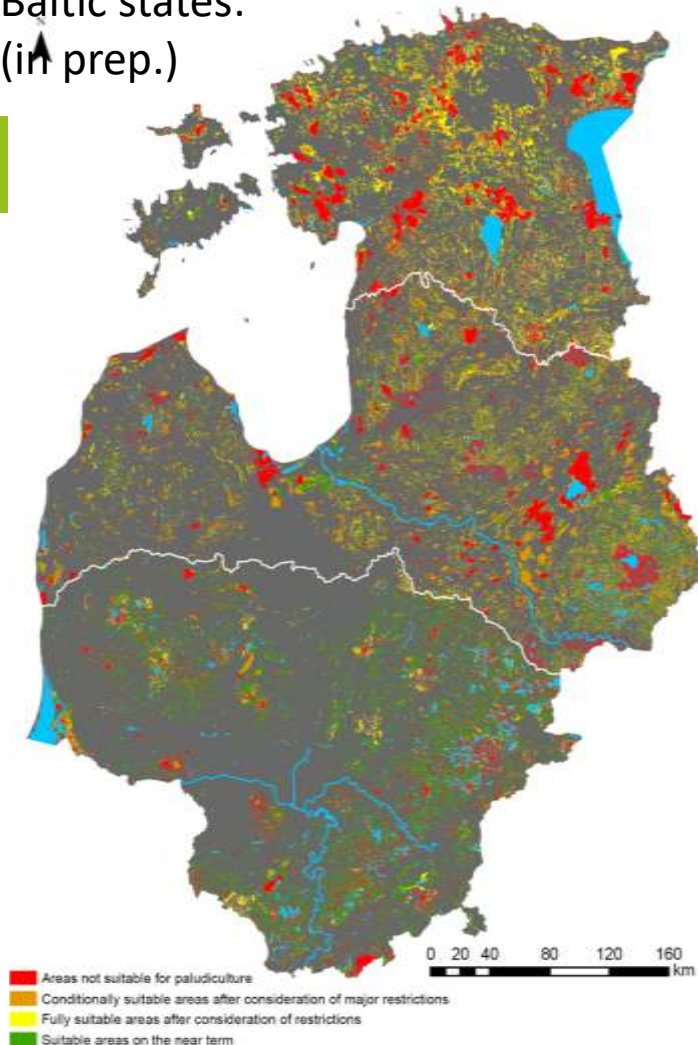
→ Area-specific strategies

## German Federal State MV:

- Klasse 1, Eignung ohne Prüfauflage, 85.468 ha
- Klasse 2, Eignung mit Prüfauflage, 49.929 ha
- Klasse 3, Eignung nur Nasswiese mit Prüfauflage, 28.827 ha
- Nicht-Eignung, 1.656 ha
- Moor ohne Feldblock, 125.481 ha



Baltic states:  
(in prep.)



## CAP in Member States

- Member States have to submit CAP strategic plans by 31.12.2021 (delay likely)
- Outline how payment schemes & conditionality are targeted and designed (following SWOT analysis)
- EC will review and “climate proof” plans acc. to Green Deal
- So far, only status quo or vague improvements expected
- New funding period: 2023-27





GREIFSWALD  
MIRE  
CENTRE

## News from Member States

- CAP won't be enough...
- Lithuania: 16 mln. € earmarked for restoration of 8000 ha from EU Recovery & Resilience Facility (RRF) by MinAgri
- Germany: “Aktionsprogramm Natürlicher Klimaschutz” (“nature climate solutions”) 4 bln. € in 2022-26
- One-off payment for investment into water management infrastructure of land owners and farmers → Carbon Farming Scheme (<https://www.succow-stiftung.de/en/peat-climate/euki-carbon-capturing-by-baltic-peatland-farmers>)
- Complemented with AECS for cont. peatland management



**Moor  
Futures**

*Ihre Investitionen in Klimaschutz.*



J.Peters



J.Peters



S. Heuzeroth



# Thanks for your attention!

J.Peters

Jan Peters

Succow Foundation / GMC

[jan.peters@succow-stiftung.de](mailto:jan.peters@succow-stiftung.de)

Twitter: @greifswaldmoor



WaterLANDS



EUKI-Baltics

On behalf of:



Federal Ministry  
for the Environment, Nature Conservation  
and Nuclear Safety

of the Federal Republic of Germany



European  
Climate Initiative  
EUKI